

Plot en schets

V4 $y = x^4 - 9x^2$

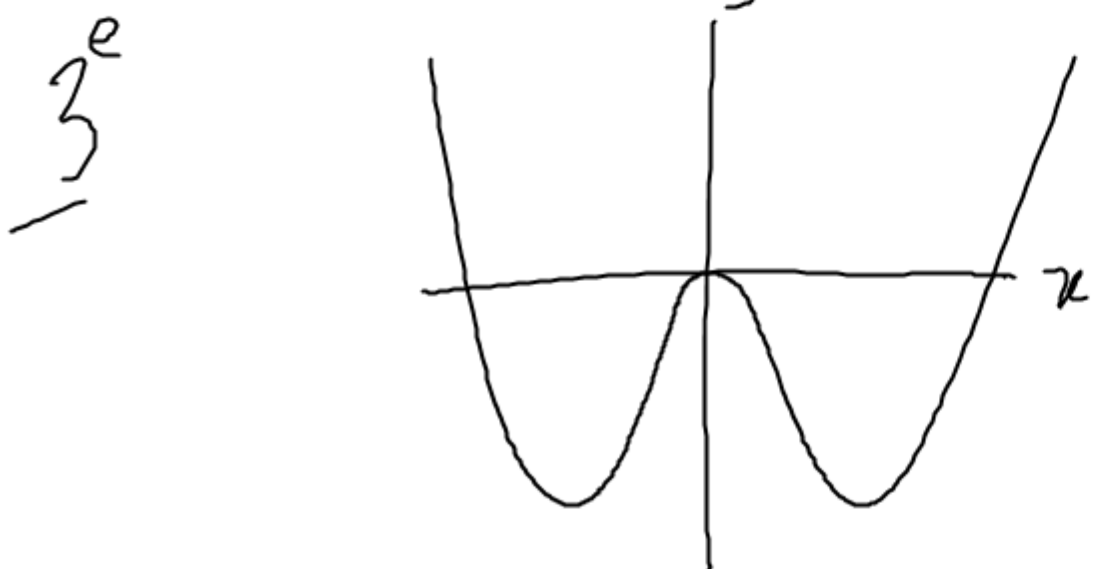
1^e noteer precies wat er bij $y1 =$ er je schermopje staat

$$y1 = x^4 - 9x^2$$

2^e noteer je vensterinstellingen (gebruik de tabel als hulpmiddel)

$$x_{\min} = -4 \quad y_{\min} = -30$$

$$x_{\max} = 4 \quad y_{\max} = 30$$



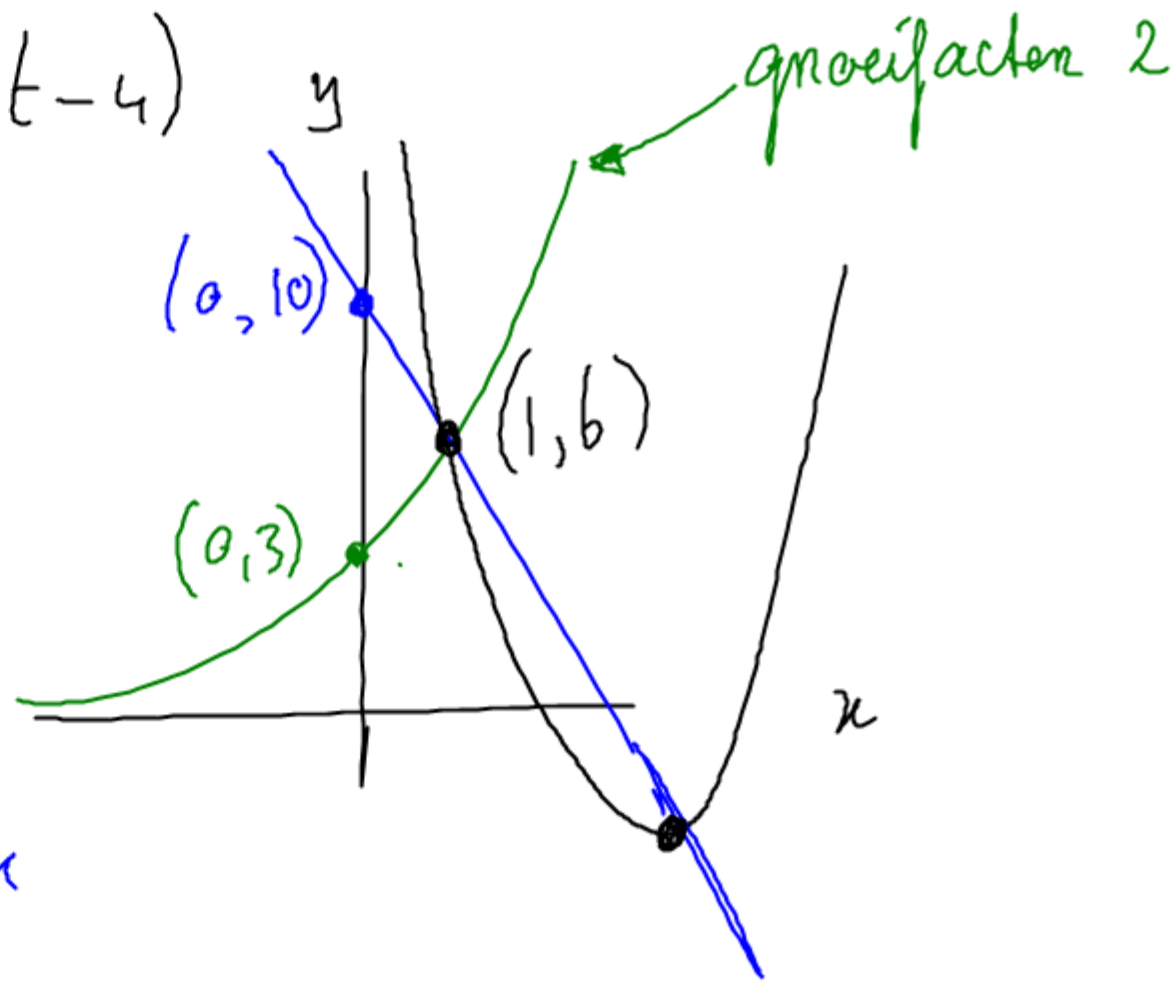
V7 a $y = 2(t-2)/(t-4)$

de lijn : $y = ax + b$

a helling getal -4

b startgetal 10

formule $y = 10 - 4x$



de exponentiële grafiek :

g groeifactor 2
b startgetal 3

$$y = b \cdot g^x$$

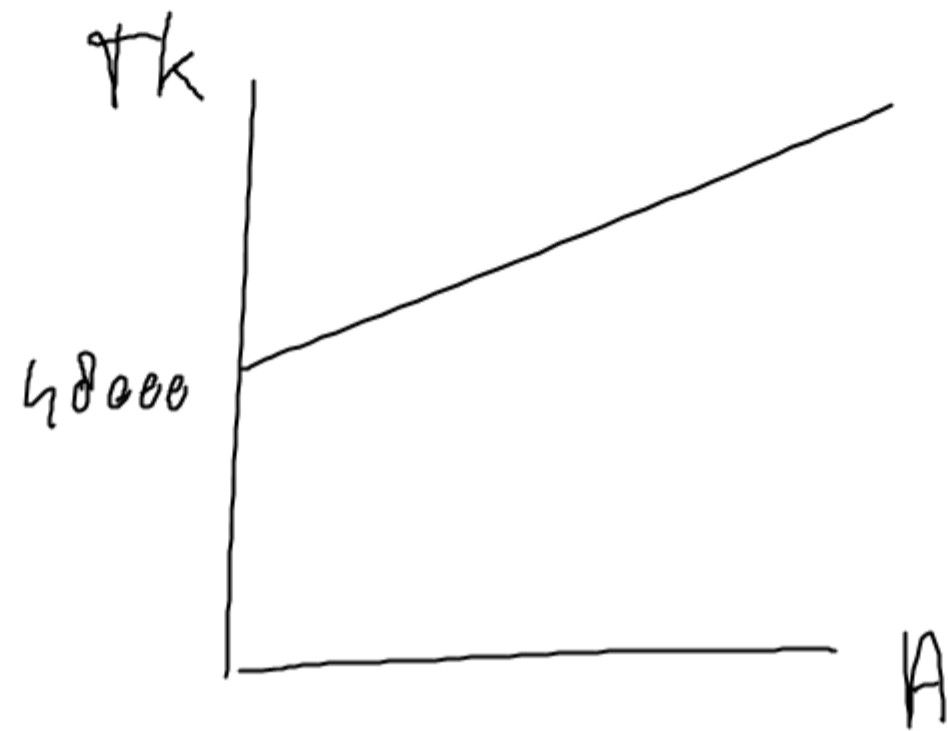
formule $y = 3 \times 2^x$

6 $\Upsilon_k = 40M + 30A$

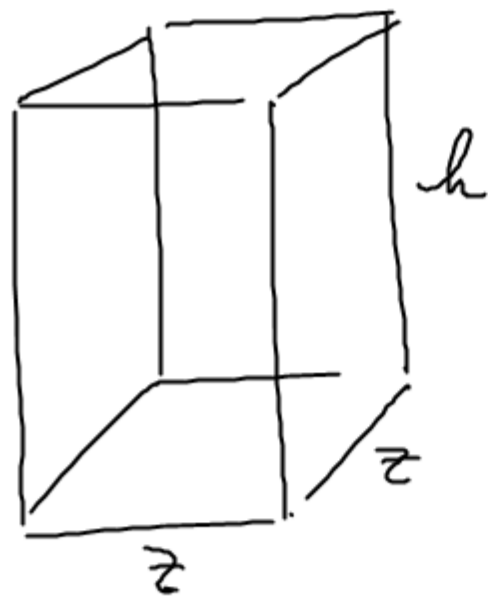
c $M = 1200$

dus $\Upsilon_k = 40 \cdot 1200 + 30 \cdot A$

$$\Upsilon_k = 48000 + 30A$$



8



$$I = 1000 \text{ cm}^3$$

$$I = z^2 \cdot h$$

atau

$$z^2 \cdot h = 1000 \quad h = \frac{1000}{z^2}$$

als $z=2$ dan

$$z=4$$

$$z=6$$

$$z=8$$

⋮

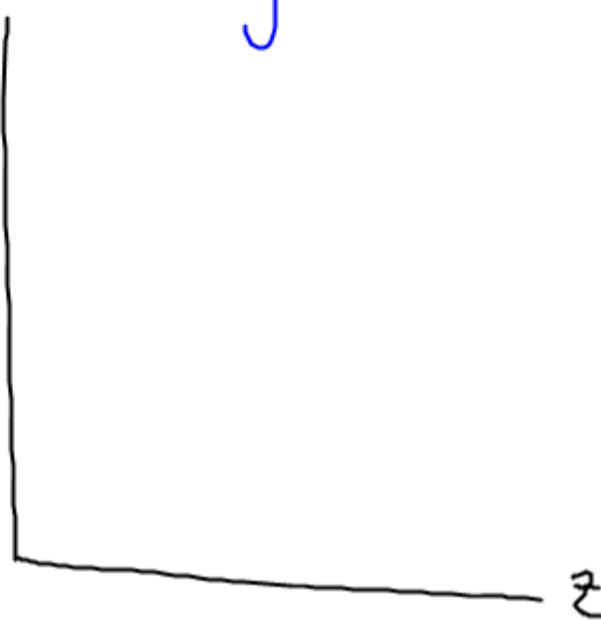
$$z=20$$

$$4 \cdot h = 1000$$

$$h = 250$$

h

$$|y| = 1000/x^2$$



13

$$y_1 =$$

$$y_2 =$$

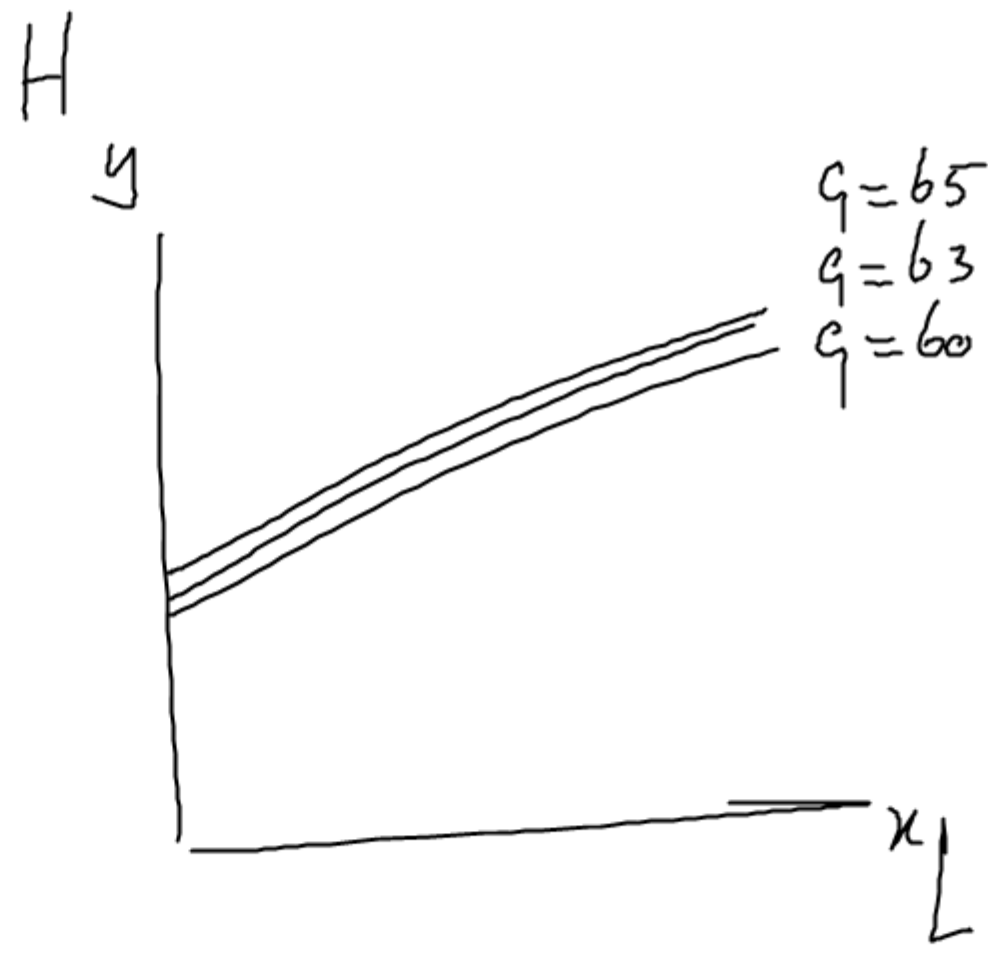
$$y_3 =$$

$$x_{\min} = 140$$

$$x_{\max} = 210$$

$$y_{\min} = 1$$

$$y_{\max} = 2$$



C

$$H = 0,038865 \cdot L^{0,725} \quad \text{als } q = 63$$

$$1,90 = 0,038865 \cdot L^{0,725} \quad y_1 = \sim$$

$$y_2 = 1,90$$

intersect geeft $x = 213,76$
 dus $L = 213,76$

1g $A = \frac{Q^2}{900 \cdot k^{1.4}}$

a $k = 650$ $Q = 18000$

b A wordt gevraagd

typ in: $18000^2 / (900 * 650^{1.4})$ enter

c Vul in $Q = 30000$

$$\frac{30000^2}{900 \cdot k^{1.4}} = \frac{1000000}{k^{1.4}}$$

d

$$y_1 = 1000000 / x^{1.4}$$

$$x_{\min} = 100$$

$$x_{\max} = 1000$$

$$y_{\min} = 0$$

$$y_{\max} = 2000$$



e
~~*~~

$$A = \frac{Q^2}{900 \cdot k^{1.4}}$$

$$Q = 30000 \text{ dus}$$

$$A = \frac{1000000}{k^{1.4}}$$

$$y_2 = 100$$

intersect

$$\frac{f}{A} = \frac{Q^2}{g_{00} \cdot k^{1,4}}$$

k 5 keer zo groot

Q gelijk

neem een gebalensbeeld